



IMPACT RADIUS

IIT JEE

(Main + Advanced)

FOUNDATION

(Class 8-10)

SAT PREP

(Coming soon)

*The information provided in this brochure is for general guidance only and is subject to change without prior notice. Impact Radius reserves the right to modify the course structure, faculty assignments, and fee schedules as deemed necessary for academic excellence.

BROCHURE

Contents

CONTENT

1. Introduction
2. Flagship Programs
3. Features
4. Test Series
5. Admission Process
6. Entrance Test
7. Code and Conduct

INTRODUCTION

01

Who we are?

In the vast and often turbulent sea of modern education, students today are frequently overwhelmed by a deluge of information, competing pressures, and the sheer magnitude of their own aspirations. In such a landscape, the greatest need is not merely for more content, but for a constant, unwavering point of reference. Impact Radius Bangalore has established itself as that essential North Star—a luminous guide that provides direction, clarity, and a steady path for students navigating the critical years of their academic journey.

What brews in our Boardroom?

At the core of the Impact Radius we believe that every student possesses a unique learning trajectory. This is reflected in our "student-centric" approach, which eschews the traditional "one-size-fits-all" lecture model in favor of deep conceptual understanding. By focusing on CBSE curricula for Grades 9 through 12, we ensure that the foundational years of a student's academic life are solid. This foundation serves as a launchpad for their more intensive programs, which prepare aspirants for grueling competitive milestones like the IIT-JEE and BITSAT.

Flagship Programmes Foundation Courses

02

Grade
8

1 Year
Classroom
course

Grade
9

1 Year
Classroom
course

Grade
10

1 Year
Classroom
course

Summer
Program

2 Month
Classroom
course

Target: Foundation | School Exams | CBSE Boards

- Course curriculum designed as per new NCERT syllabus
- Our curriculum offers a comprehensive suite of core disciplines, including Mathematics, Physics, Chemistry, and Biology, specifically designed to align with the latest NCERT standards.
- Concept building through theory illustrations and derivations in the classes
- In-person doubt resolution and Educator Led Practice (ELPS)
- Transparent, data-backed performance reporting and collaborative parent-educator symposia via digital channels.
- Seamless RFID-enabled check-in with real-time entry/exit notifications for parents to ensure a safe and accountable learning environment.
- Regular progress updates to Parents through WhatsApp Parent-Teacher Meetings

Engineering Entrances

Grade 11 - 12

Grade
11

1 Year
Classroom
course

Grade
12

1 Year
Classroom
course

Target: CBSE | JEE Mains + Advanced | BITSAT | KCET

- Comprehensive syllabus coverage as per JEE Curriculum
- Focused mastery through rigorous theoretical derivations and multi-dimensional problem-solving techniques to tackle non-routine JEE challenges.
- Our curriculum offers a comprehensive suite of core disciplines, including Mathematics, Physics, Chemistry, specifically designed to align with the latest NCERT standards.
- Transparent, data-backed performance reporting and collaborative parent-educator symposia via digital channels.
- Seamless RFID-enabled check-in with real-time entry/exit notifications for parents to ensure a safe and accountable learning environment.
- Regular progress updates to Parents through WhatsApp

Parents we've got you covered

03

Regular Attendance Updates



- Stay on top of your ward's attendance
- RFID based attendance, real time updates
- Receive an alert if your ward does not attend a class

Detailed performance reports



- Evaluate time, attempted questions, and missed opportunities to score better marks
- Tailored learning plans for areas for improvement
- Comparison with peers through cumulative test reports

Frequent parent-teacher connects



- Connect with teachers every month on your ward's performance
- Understand how your ward is progressing towards the goal
- Flexible communication channels

Flexible payment options like EMIs etc



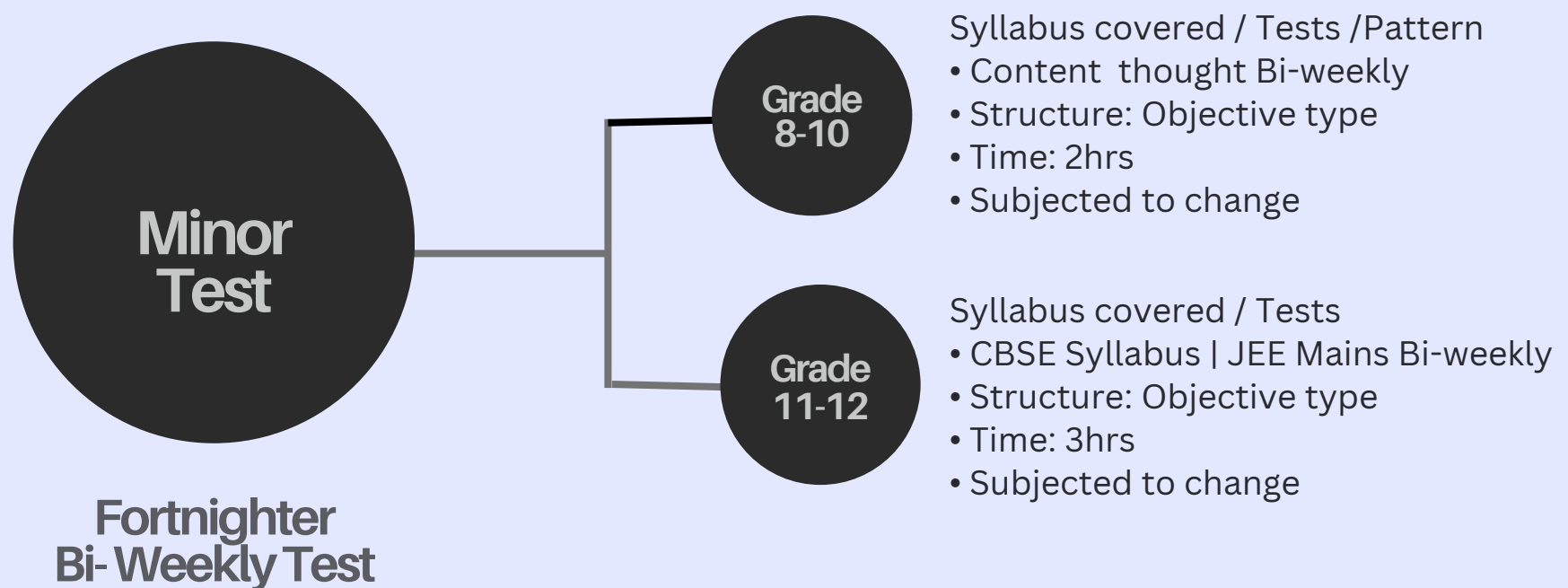
- Affordable and Reasonable Pricing
- Flexible instalment options available
- Multiple payment modes available

Test Series

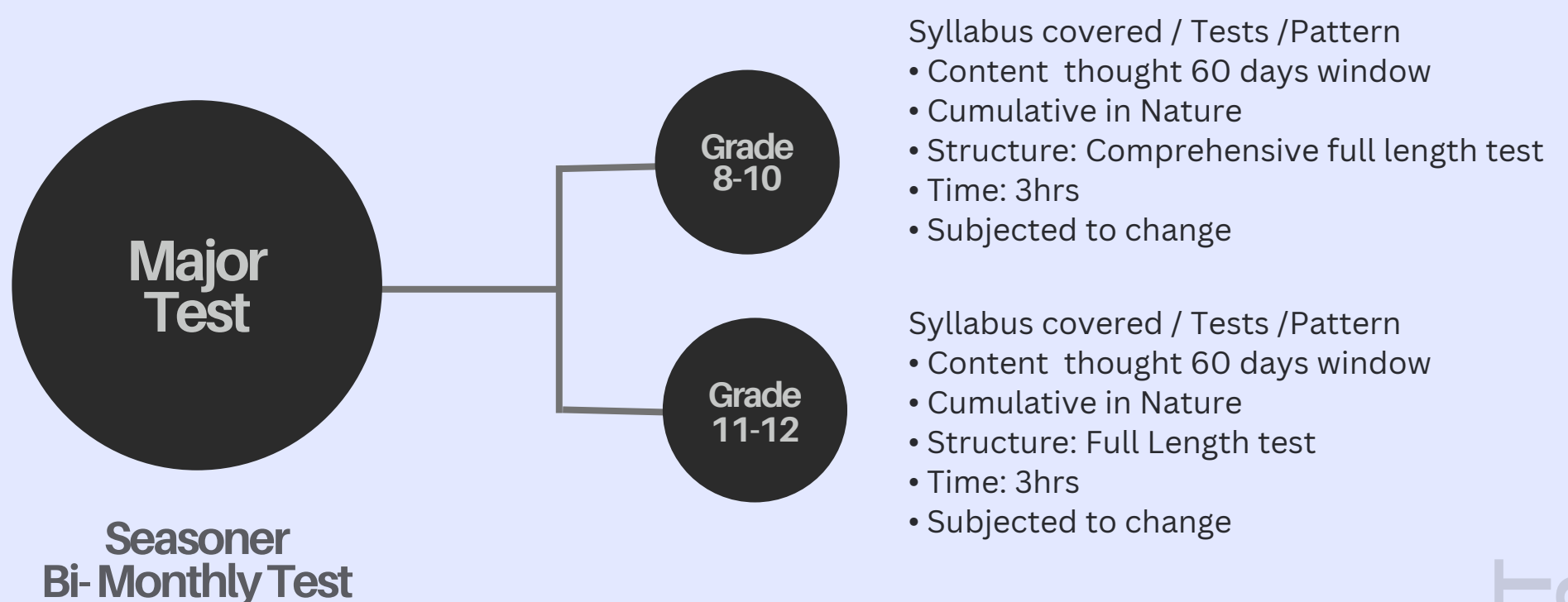
Testing Pattern: Major + Minor

04

Studying a textbook is a linear process, but an exam is multidimensional. A test series forces the brain to retrieve information under pressure and apply concepts to unfamiliar problems. It moves a student beyond rote memorization into the realm of critical thinking. Without this practice, even a brilliant mind can be paralyzed by the "application gap" when faced with a complex numerical or a tricky conceptual question.



Minor tests evaluate content taught over a specific fourteen-day window



the Major Test covers a 2-2.5 monthly syllabus represents a "cumulative milestone"

More on Minors

The transition from broad theoretical study to the focused rigors of a bi-weekly test series represents a critical pivot in any academic journey. When a test is designed to evaluate content taught over a specific fourteen-day window, it serves as a high-resolution snapshot of a student's short-term retention and their ability to integrate new information into an existing knowledge framework.

From a cognitive perspective, focusing on the most recent two weeks leverages the principle of Spaced Repetition. By forcing the brain to retrieve information shortly after it was first introduced, the test series aids in moving concepts from the fragile short-term memory into the more robust long-term memory. This bi-weekly cycle ensures that the foundation of the syllabus is not just "covered," but deeply ingrained.

More on Majors

Short-term quizzes can sometimes be "cleared" through cramming. However, a Major Test covering nearly three weeks of content acts as a filter for latent weaknesses. By expanding the scope slightly, the test reveals if a student has truly internalized the first week's material or if it has already begun to fade as new information was introduced. It serves as a vital diagnostic tool for long-term memory durability.

To conquer a 2.5-month syllabus, the approach must be structural:

The Layered Revision: One cannot start revising two days before. It requires a "rolling revision" where Week 1 material is reviewed in Week 3, Week 6, and again in Week 10.

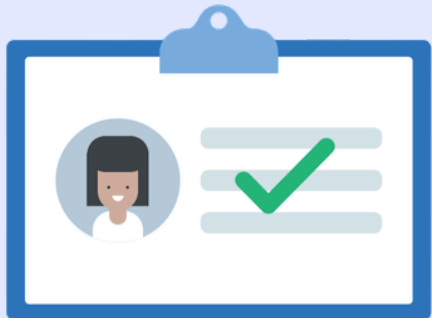
Priority Mapping: By this stage, a student must identify their "High ROI" (Return on Investment) chapters—those that appear frequently in the Major Test and carry high marks.

Simulated Environment: These tests should be taken with the exact same discipline as the final day, as they are the most accurate predictors of one's eventual rank.

Explore Admission

05

We Follow a short application and assesment before confirming admissions

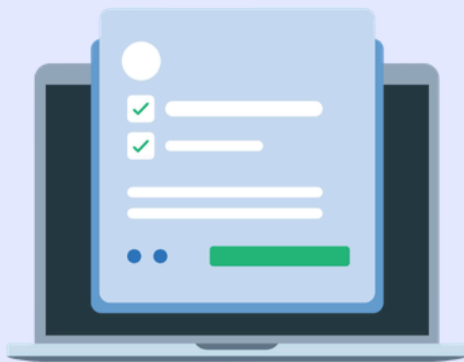


Admission at the Impact Radius

Learners are required to write a entrance/diagnostic test.

Fill the application form at the centre

A Confirmation mail is sent, as you commit yourself to Impact Radius



Admission through the online portal

Learners can fill the online application form by visiting <https://Impactradius.in/admissions>

However, learners are required to write the entrance/diagnostic test offline at the centre



Documents required at the time of admission

- Duly signed Application form
- Any photo identification proof (Government-issued IDs such as Adhar card, APAR ID)
- Three passport size photographs
- Academic History/Current Grades
- School ID Card
- Board Marksheet (10th moving to 11th)

Modes of Fee Payment

- UPI Payments
- EMI (Easy Monthly Installments)
- Net Banking
- Debit Cards/ Credit Cards
- Cheques
- Cash Payments

Entrance Exam

06

We follow a selective entry process via Assessment based Admission. This helps us understand whether the student is the right fit for our academic pace



MODE: Offline

TEST TYPE: ORR Testing

DURATION: 60- 100 Mins

Entrance test at Impact Radius is more of a Ideal-fit test. We are not looking for students who have memorised the most. We are looking for students who understand the deepest. The entrance exam is designed to reveal how you think – your logic, your scientific intuition, your willingness to attempt what you haven't seen before. Every student here earned their seat. That shapes everything – the pace, the peer group, the results.

Syllabus to prepare the test, but not limited to

- Grade 8 - Grade 10
Physics, Chemistry, Mathematics and Biology of the previous grade
- Grade 10 moving to Grade 11
Physics, Chemistry and Mathematics of Grade 10
- Grade 11 moving to Grade 12
Core concepts in Physics, Chemistry and Mathematics of Grade 11

What the Exam Tests?

- Core concepts in Physics, Chemistry and Mathematics
- Logical and analytical thinking
- Problem-solving approach – not just memory

What follows next?

- Results shared on the same day
- Counselling session with faculty
- Batch placement – Foundation or Advanced
- Fee discussion and enrollment

Code of Conduct

07

Enrollment at Impact Radius is a commitment to academic discipline, integrity, and mutual respect. Our mission is to transform potential into achievement, a process that requires a focused and professional atmosphere. Every student is expected to uphold the following pillars of conduct.

1. Academic Integrity & Rigor

- **Preparedness: Preparation is Expected, Not Optional.** Students must arrive for every session with the required materials, pre-reading completed, and a mindset ready for intensive study. This is not a place where you show up empty and leave full. You are expected to bring effort - we provide direction.
- **Punctuality:** Time is our most valuable resource. Students must be in their seats and ready to begin at least five minutes prior to the scheduled start time.
- **Academic Integrity Is Sacred - Copying, cheating or misrepresenting work in any test or assignment results in immediate disciplinary action.** We build real ability here. Shortcuts are incompatible with that goal.
- **Assignments Are Submitted on Time - Deadlines exist for a reason.** Late submissions without prior communication are not accepted. If there is a genuine reason, communicate it before the deadline — not after.
- **Tests Are Taken Seriously - Every weekly test is a simulation of the real exam environment.** Students are expected to attempt every test with full seriousness — no casual attempts, no blank submissions without effort.

2. The Professional Environment

- **Digital Decorum:** Mobile devices and laptops are permitted strictly for academic purposes. Unauthorized use of social media or non-sanctioned apps during instruction is prohibited.
- **Engagement:** Active participation is mandatory. Silence is not always a sign of learning; we encourage rigorous questioning and intellectual curiosity.
- **Feedback Is Received with Maturity - Faculty feedback — however direct — is given in your interest.** Students are expected to receive it with openness, not defensiveness. Growth requires the ability to hear what needs to improve.

- Parent Communication Goes Through Proper Channels - Concerns regarding academics, batch placement or fees are communicated through scheduled parent meetings – not through informal messages to faculty at odd hours.

3. Operational Compliance

- All Financial Transactions at Impact Radius are handled by **VaultX** our fee collection Vertical to streamline academics and financial workflows.
- Financial Standing: To maintain active enrollment and access to academic resources, all fee installments must be settled via the Vaultx portal by the stipulated deadlines.
- Hacking of Institutional Website, VaultX Vertical, Testing System is an offence that will not be tolerated.

4. Disciplinary Protocol

To maintain our institutional standards, we follow a progressive disciplinary framework:

- Questions Are Encouraged. Disruption Is Not - Intellectual curiosity is welcome and celebrated. Disruptive behavior, side conversations, or deliberate derailment of a session will not be tolerated.
- Originality of Work: Plagiarism or any form of academic dishonesty will result in immediate disciplinary action. Success is earned through individual effort.
- Respect is Non-negotiable: Our institute is a collaborative ecosystem. Harassment, bullying, or disruptive behavior that hinders the learning of others will not be tolerated.

CONTACT
Us

Contact Information

Call us: +91 8123501705

Alternate: +91 81972 31005

Mail us: info@impactradius.in

Address: No 79, 1A Main Bethel Nagar, Ayappnagar,
KR Pura, Bangalore - 560036

